

# CAPABILITY STATEMENT

## OUR VISION

*To be a leader in the steel  
detailing & construction  
modelling industry.*



*We will be renowned for  
our quality, cost  
effectiveness, innovative  
approach and professional  
manner*

# idetail

## Construction Modelling

- Steel Detailing / Workshop Drawings
- Concrete Tilt Panel Drawings
- BIM Modelling
- Tekla Implementation / Customisation / Training / Consulting

## Contents

Company Profile .....	3
People .....	4
Steel Detailing / Workshop drawings .....	5
Concrete Tilt Panel drawings .....	6
BIM Modelling .....	7
Tekla implementation / Customisation / Training & Consulting .....	8
Project Examples .....	9
Contact Details .....	12



### OUR VISION

*To be a leader in the steel detailing & construction modelling industry.*

*We will be renowned for our quality, cost effectiveness, innovative approach & professional manner.*

### OUR VALUES

*Ethical standards.  
Recognition & Respect for all stakeholders.*

*Quality.  
Trust & Loyalty.  
Commitment & Passion.  
Teamwork.*

*“One stop construction modelling service”*

## Company Profile

**idetail** is based in Christchurch, New Zealand and is part of the **idec** group of companies which is based in Brisbane, Australia. Since its inception in 2009, **idetail** is becoming well-recognised within the steel detailing industry, offering an international service primarily to New Zealand, Australia and the United States.

Frequent users of our services are from the structural steel, concrete and general construction industries.

**idetail** had its origins as an in-house arm of **idec**, a company that specialises in the design, fabrication and erection of steel structures throughout Australia and internationally. In 2009 an independent company “**idetail Pty Ltd**” was formed and based in Christchurch, NZ, taking advantage of the wealth of knowledge and experience of local staff.

**Idetail** utilises Tekla Structures 3D modelling software, Skype for screen sharing and conferencing and have access to a variety of tools for integration purposes. For United States and Australian clients we provide a toll free number so you can talk to us from your office or mobile phone anytime.

Our quality system is in accordance with ISO 9001. At **idetail** we recognise the critical importance of the quality assurance process and are continuously reviewing and revising this process to ensure a quality end product is delivered to our clients.

## People

As a vital part of the **idec** group of companies, **idetail** is managed by the **idec** board of directors in Australia with Glenn Gibson as the Chief Executive Officer. Glenn is an engineer by profession with extensive local and international experience in steel design and fabrication.



**idetail's** General Manager, Shane Dougherty, is based at the **idetail** office in Christchurch, New Zealand. Shane has a background spanning 15+ years in steel detailing and has managed major projects in both Australasia and the USA. Shane also has vast experience in Tekla development and customisation, enhancing **idetail's** expert knowledge and use of Tekla Structures.

**idetail's** Senior Project Manager, Gary Fohl has extensive experience in the industry. Gary has managed drawing offices in NZ and Thailand and worked for Tekla assisting clients with training and development throughout the world.

The **idetail** operational team consists of 7 well experienced detailers, all capable of acting at project management level. Throughout their multinational careers some have worked as structural designers, software trainers, customisation and support technicians, field supervisors, and fabrication shop QA officers.

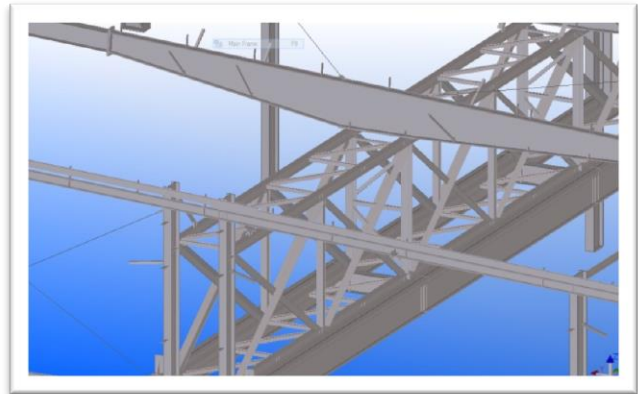
We are able to understand the concerns of many different trades when performing our services, thereby easing and simplifying the work of our downstream colleagues.

*“Consolidating and maintaining growth and continuous staff training is high on my agenda as we see idetail forge ahead”*

*Glenn Gibson (idec Group CEO).*

## Steel Detailing / Workshop drawings

Our industry experience allows us to provide the information that your shop and field personnel need to complete your project profitably and accurately. In addition to providing drawings in Imperial and ISO formats we create a data rich model that can output virtually any information you deem important. This will be in a format that you can use to accomplish your contract on time and within budget. We can provide you with reports that contain:



- Accurate quantities of all the components you will need
- Surface area calculation of painted items for waste less painting costs
- Location of centres of gravity for accident free rigging
- Erection sequencing
- Visualisation for unobstructed lifts
- Economical crane placement

If it's important to you, it's important to us!

Our broad experience includes shop drawings for multi-story buildings, schools, hospitals, material handling systems, military structures, industrial campuses, commercial complexes, marine applications and artwork. We customise our drawings to follow regional practices for clients in the New Zealand, Australia, Canada and the United States.

All types of electronic data can be provided to suit individual workshop requirements and steel suppliers. These include:

- Marking plans / Erection drawings
- Assembly drawings
- Single part drawings
- CNC files for a variety of manufacturing machines
- DXF files
- Interface files for use with a vast array of CAD software
- Data reports, text, pdf and in excel format
- BIM modelling

*“The attention to detail is critical, ensuring that the building components are complete and that it all fits together on site is essential”*

## Concrete Tilt Panel drawings

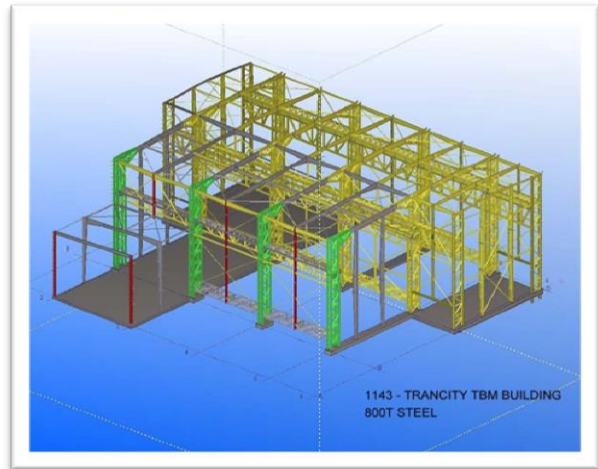
As well as steel detailing services, we also provide all necessary drawings, reports and data files to efficiently lay out your panel beds. If you're engaged in a construction project with a combination of steel and tilt panels, it only makes sense to use us as your *one-stop-construction- modelling-shop*.

If you've been involved in similar projects in the past, you will be aware of how troublesome interfacing steel and tilt panels can be. Having both done by us will ensure the steel and panel connections will fit.



## BIM Modelling

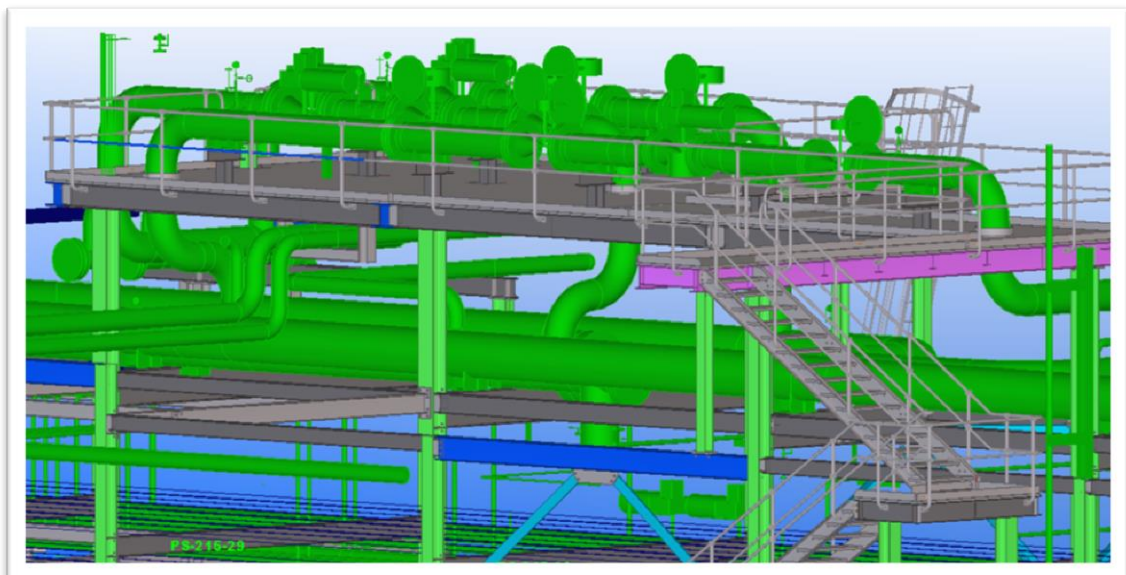
BIM (Building Information Modelling) is the latest buzzword in the construction industry. Tekla Structures (previously known as Xsteel) has been capable of storing and modelling such information since the 1990s. Our staff were using it at the beginning! The Tekla technology was BIM before the term BIM was 'invented'.



Building Information Modelling and its concomitant process IPD (Integrated Project Delivery) are beginning to take hold around the world. In order to be part of this development it requires experienced personnel who understand the process and are aware of the advantages and pitfalls surrounding it. Our long involvement and thorough knowledge are of great benefit to your needs.

We can customise the data stored and transferred within our model to expedite communications to any and all parties involved in your construction project. Whether it's upstream all the way to the owner, or downstream to the interior designers we can provide the information needed to get the job done right the first time. By involving us in the preconstruction design phase we can maximise the savings in time and cost for everyone! Imagine what accurate scheduling and bidding could be accomplished if at concept level you could provide a set of bid documents providing weights, areas, and quantities.

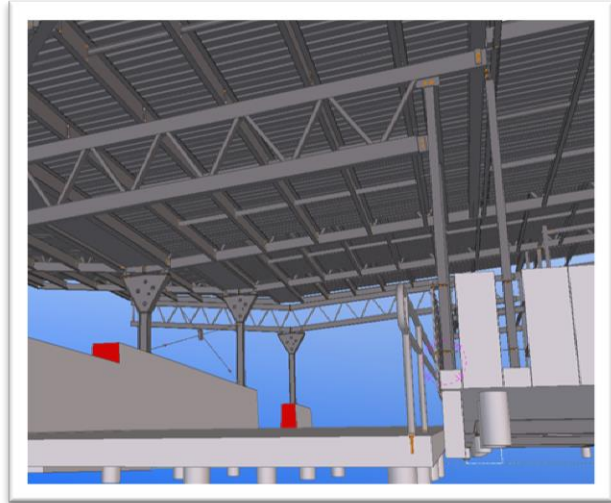
Utilising Tekla's *100% free* construction coordination software **Tekla BIMSight**, we have provided BIM models for use in engineering and architectural reviews, estimating, quantity surveying, fabrication scheduling, erection scheduling, multiple trade collaboration, and even maintenance scheduling for completed structures.



## Tekla implementation / Customisation / Training & Consulting

If you are considering using Tekla Structures as your modelling platform or need to up-skill your employees in the creation and use of fabrication and BIM related data, then you need to look no further for the personnel to provide the richest training and customisation experience available.

In order to be competitive you need the right tools and the most knowledgeable, skilled employees to take advantage of them. We can provide you with a customised Tekla environment and train your employees to exploit every aspect of its capabilities. Whether it's modelling, report & drawing appearance or content, data transfer to CNC equipment, and even implementation within your administrative, production, or logistics team members, we can show you how to get the most out of your investment.

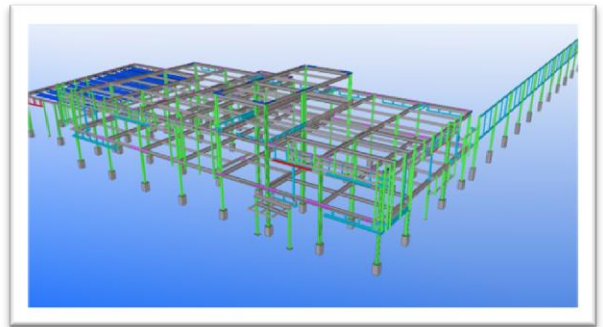


We have staff members who have worked directly for Tekla providing training, customisation, and development services. We continue to keep abreast of all new features added to the software, and strategies for further development. We have also been applying the software for over 15 years, so not only do we understand what it is supposed to do we know what it CAN do.

## Project Examples

### *Studio West Housing*

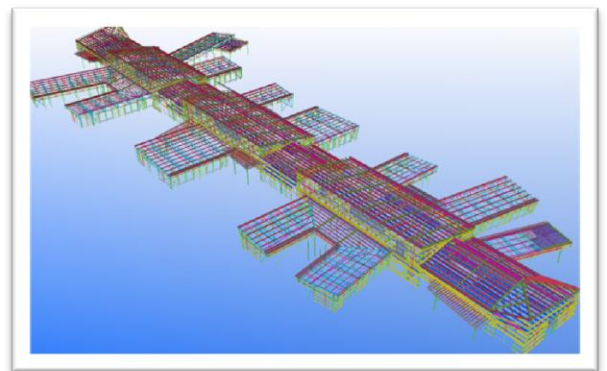
**idetail** provided steel fabrication drawings for the housing project at the State University of New York. The structure consisted of 60 tons of structural steel along with an architectural screen wall of perforated light gauge steel, fastened with machined pins and cotter keys. **idetail** provided not only drawings but also CNC data for machining the more intricate parts of the build.



### *Gold Coast University Hospital Mental Health Unit*

**idec/idetail** was engaged by Bovis Lend Lease to fabricate, supply and install the structural steel for the Gold Coast University Hospital.

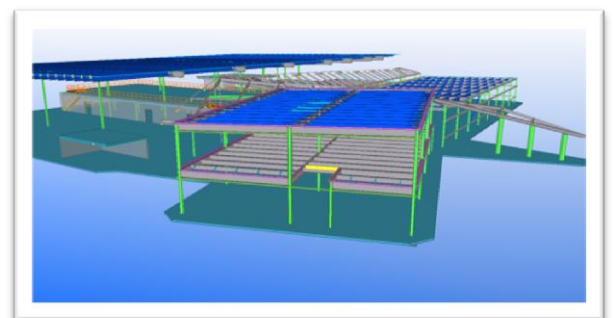
The hospital site was a green field site and is the largest building infrastructure work undertaken in Queensland. Structural steel exceeded 400 tonnes and the overall project will be in the order of AU\$1.6 billion.



### *PharmaForce*

**idetail** was engaged to supply steel fabrication drawings for this three building campus providing Administration, Manufacturing and R&D services in New Albany, OH, USA.

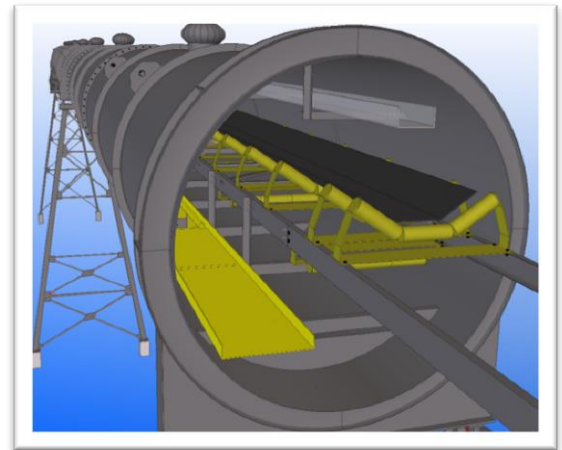
There were 600 tons of structural steel within the three buildings which were architecturally connected by a 90 ton atrium consisting of a glazed hip and valley roof supported by exposed steel.



### ***Florida Power Development***

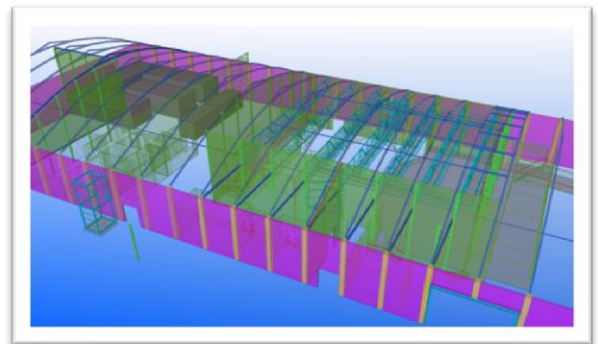
On this project **idetail** provided shop fabrication drawings, CNC and BIM data on a multitude of material handling structures. This plant addition consisted of conventional conveyers, fully enclosed tube conveyors, transfer towers, service towers, belt take-up configurations, head frames, tail frames, etc.

By utilising a BIM coordination model other trades were able to seamlessly integrate their requirements into the project.



### ***The Court Theatre***

**idetail** provided the shop fabrication drawings, CNC data and BIM coordination model for this tricky little local Christchurch project. Due to the recent earthquake damage a local theatre company decided to create a temporary structure within an existing historic grain storage warehouse. The structural steel had to be re-designed and detailed after exact field measurements of the existing structure were taken. There was not a square corner or consistent elevation throughout!

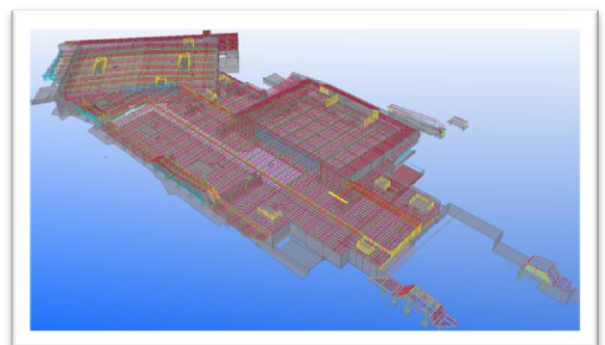


Although only weighing in at 38 tonnes of structural & miscellaneous steel (which eventually will be removed and reused) we modelled timber framing, Kingspan structural timber panels, plumbing, rigging, flooring, and even shipping containers being recycled as a bar, toilets, and a ticket booth.

### ***Mount Sheridan Plaza - Expansion***

**idetail** was engaged to provide the shop fabrication drawings, CNC data and BIM coordination model for this 1100 tonnes shopping mall expansion in Cairns, North Queensland.

In this simple BIM exercise our model was utilised by the Architect and Engineer during the approval phase. This highlighted conflicts that existed between design intent and structural steel work, which in turn avoided potential field rework.



**idetail** has supplied workshop drawings for many projects in New Zealand, Australia and the USA. The following list is just a sample of the various projects that **idetail** has been proud to be involved with.

	<i><b>Project</b></i>	<i><b>Location</b></i>
<i><b>Military</b></i>	SOF Training & Operations Centre	Albuquerque, NM
	FY11 Aerial Delivery Facility	Albuquerque, NM
	VA Mental Health Centre	Albuquerque, NM
<i><b>Industrial</b></i>	Coca Cola Blowfill Production Line	Perth, AU
	Leyland, Mason & Ensor Dairy Sheds	Canterbury, NZ
	Pharmaforce	Columbus, OH
	Prometal's Warehouse	Christchurch, NZ
	Fonterra Piperacks	Christchurch, NZ
<i><b>Medical</b></i>	Mackay Base Hospital	Mackay, AU
	Ipswich Hospital Expansion	Ipswich, AU
	Gold Coast University Hospital Mental Health	Gold Coast, AU
<i><b>Mining</b></i>	Yarrabee Coal Wash Bay	QLD, AU
	GEMCO Conveyor 2 Expansion	NT, AU
	GEMCO Conveyor 5 Expansion	NT, AU
	Holcim Tertiary Bldg	QLD, AU
	Holcim Noise Enclosures	QLD, AU
<i><b>Oil &amp; Gas / Energy</b></i>	Biofuel System	Stockton, CA
	Biomass Fuel Boiler	Alta Vista, CA
	Santos GPLNG Project	QLD, AU
	Kelvin Grove Substation	QLD, AU
<i><b>Commercial</b></i>	Briscoes	Christchurch, NZ
	The Court Theatre	Christchurch, NZ
	Yarrawonga Showrooms	Victoria, AU
	Commodity Court	QLD, AU
	Kraft Kedron Bldgs	QLD, AU
<i><b>Education</b></i>	Southern Cross School	Dalby, AU
	DEECD Schools	ACT, AU
	Unity College Multiple Purpose Facility	QLD, AU
	Arethusa College MPH	Deception Bay, AU
	St Andrews College MPH	Peregian Springs, AU
	Ithaca City Schools	Ithaca, NY
<i><b>Infrastructure</b></i>	Altmar Parish Schools	Parish, NY
	Spoil Shed for Airport Link	Kedron, AU
	Tunnel Boring Machine Shed	Brisbane, AU
	Pre-Cast Shed for Airport Link	Bald Hills, AU
	Battelle Darby Nature Centre	Columbus, OH

## OUR VALUES

*Ethical standards*

*Recognition and respect of  
all stakeholders.*

*Quality*

*Trust & Loyalty.*

*Commitment & Passion*

*Teamwork*

## Contact Details

### For Direct Contact

Phone NZ: +64 3 943 2240  
AU Toll Free: 1-800-62-1180  
US Toll Free: 1-866-233-2498

Fax: +64 3 943 2244

Email: [info@idetail.co.nz](mailto:info@idetail.co.nz)

### Street Address

47/A Mandeville Street, Riccarton, Christchurch, 8011  
New Zealand

### Postal Address

P.O Box 33-425, Christchurch, 8011  
New Zealand